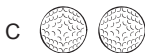
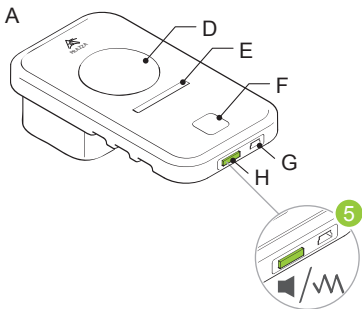




Golf ball tracker

Instruction manual

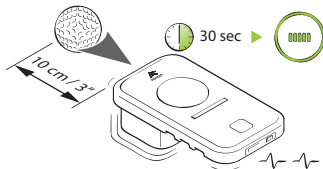
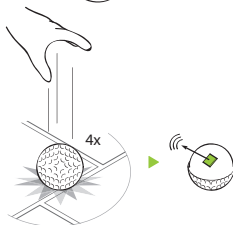


www.prazza.com +

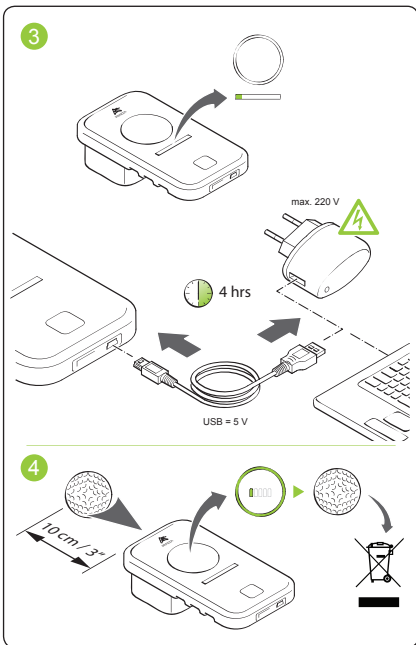


II

1







© 2010 Prazza



The equipment is CE and UL certified. For more information about copyright, guarantee and technical information, visit our website: **www.prazza.com**

General

Intended use

The appliance is designed to locate lost golf balls. Any other use is strictly prohibited.

General safety rules



WARNINGS!

- Read and understand the entire manual before you use the appliance.
 - Failure to follow the warnings and instructions can result in electric shock, fire and/or serious injury.
 - Retain this manual for future reference.
 - Do not disassemble the appliance.
 - Do not use the appliance in restricted areas.
-
- Use your charger (B) only to charge the appliance.
 - Replace defective charge cables immediately.
 - Do not expose the charger (B) to water.
 - Do not open the charger (B).
 - Always check that the mains voltage corresponds to the voltage on the rating plate.

Package contents and features

A golf ball tracker	E battery indicator
B charger plug + USB cable	F On/off switch
C golf ball (2x)	G USB port
D status screen	H mode slider

Quick start

- i** Make sure the appliance is charged before use
- I** Charge the battery
- II** Register a new Prazza golf ball
- III** Mark your Prazza golf ball

How to

- 1** register a new Prazza golf ball
- 2** locate your Prazza golf ball
- 3** charge the battery of the appliance
- 4** check the battery status of the Prazza golf ball
- 5** select a sound mode

See corresponding illustrations.



www.prazza.com