

(These Instructions have two sections, V1S Wheel Installation Instructions, and V1S Brake Pin Housing Installation Instructions.)

## V1S Wheel Installation Instructions

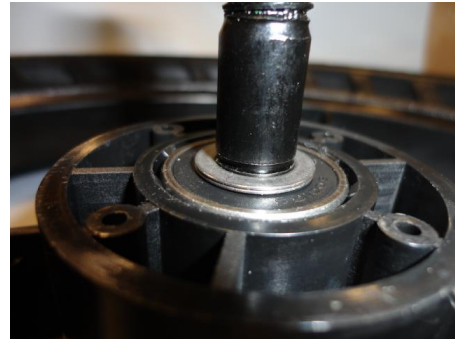
**Note:** The Axles for V1S Wheels are specifically designed for V1S Wheels.

**Other Axles will not work on V1S Wheels. V1S Axles will not work on other Wheels**

**Tools Needed:** Safety Glasses; 19MM Wrench (to remove Wheel Nuts); 10MM Wrench; P1 Screwdriver; P2 Screwdriver; Pliers, or Flat Head Screwdriver; Plastic, or Rubber, Mallet (a Hammer will work if needed).



Insert Rear Axle. The O-Rings are tight, and the Axle should be pounded in firmly using a Rubber, or Plastic, Mallet.



If the E-Clip slot is too far out, Shims, or an extra Washer, may need to be added.



**WEAR SAFETY GLASSES WHEN ADDING E-ECLIPS!** Use Pliers, or a Flat Head Screwdriver, to add the E-Clip.



Add Rear Wheel Center Cap. Start the Cap off slightly ajar, then twist it into place.

**Wheel Instructions Page 1 of 3 (Over)**



Ensure the Brake Disc is seated so that it does not spin.  
After the Axle is installed, use a P1 Screwdriver to attach the Brake Disc on one Rear Wheel.



**WEAR SAFETY GLASSES WHEN ADDING E-ECLIPS!** Add an E-Clip to inner slot of the Cap Side of the Front Axle.  
Install the Front Axle with the Cap Side out of the Deep Cavity of the Front Wheel.



**WEAR SAFETY GLASSES WHEN ADDING E-ECLIPS!**  
If the E-Clip slot is too far out, Shims, or an extra Washer, may need to be added.



Add Front Wheel Center Caps. Start the Cap off slightly ajar, then twist it in place.



**WEAR SAFETY GLASSES WHEN ADDING E-ECLIPS!**

Use Plyers, or a Flat Head Screwdriver, to add the E-Clips to the outer E-Clip slots.



**Follow this link to a video of V1S Rear Wheel installation:**

[http://cp.mcafee.com/d/2DRPoArho76zBAQslCzBdUTsSyzy--ed7bRS3qaabXXRSmrCQkknTNNEVuK-rhhhvsKyUyedydv1l6UaRrxfgVsThK2JmUjSkendLf9SgiuvW\\_8T7cTKUeWZOWbat-hud7bzPzX\\_khjmKCHtUtOEuvkzaT0QSyrhdTdTdw0GdMIGT2uOxO-4WC2YWBPCAfHjws1B5LZ2SNCnz-NbPB7W6XrfOMaET1mHs9Xa7bCQkhPa9I5-Aq80Oyc6y01iv-uq80aBexJ5UStBN](http://cp.mcafee.com/d/2DRPoArho76zBAQslCzBdUTsSyzy--ed7bRS3qaabXXRSmrCQkknTNNEVuK-rhhhvsKyUyedydv1l6UaRrxfgVsThK2JmUjSkendLf9SgiuvW_8T7cTKUeWZOWbat-hud7bzPzX_khjmKCHtUtOEuvkzaT0QSyrhdTdTdw0GdMIGT2uOxO-4WC2YWBPCAfHjws1B5LZ2SNCnz-NbPB7W6XrfOMaET1mHs9Xa7bCQkhPa9I5-Aq80Oyc6y01iv-uq80aBexJ5UStBN)

3-1-2017

*Wheel Instructions Page 3 of 3*

**Sun Mountain**

**301 North First St. Missoula, MT 59801**

**(800) 433-9224**

[www.sunmountain.com](http://www.sunmountain.com)

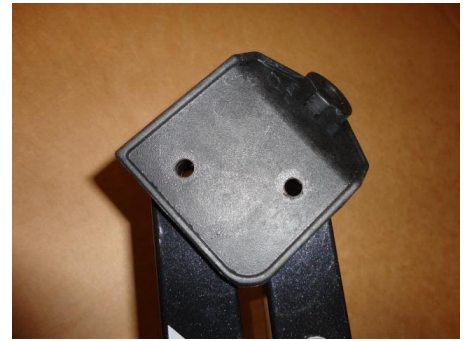
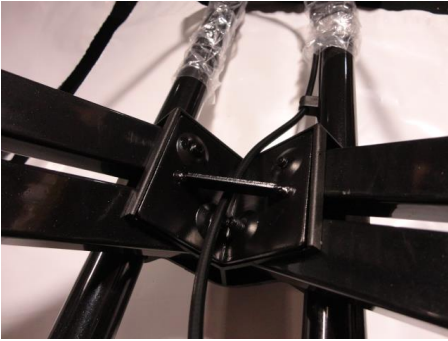
**(Over)**



## V1S Brake Pin Housing Installation Instructions

**Note:** Installation must be done with the Right Rear (Brake Side) V1S Wheel Off the Cart.

**Tools Needed:** 10MM Wrench; P2 Screwdriver; 3MM Allen Head Wrench, Needle Nose Pliers.



Thread the Brake Cable (in the Brake Cable Sheath) through the slot in the back of the Mid Brace (009-006).

Use a P2 Screwdriver and a 10MM Wrench to remove the two Screws (005-029), and two Nuts (SV1-202), attaching the Right Wheel Fitting (005-012R).



Insert a Rectangle Head Screw (SV1-208) into the inside Rectangle slot of the Brake Housing Adaptor, as shown.

Place the Brake Housing Adaptor on the Right Wheel Fitting (005-012R).

Ensure the Rectangle Head Screw is seated in its slot.

Use a P2 Screwdriver and a 10MM Wrench to attach the Brake Housing Adaptor to the Right Wheel Fitting (005-012R), using the two Screws (SV1-207), and two of the M6 Nylon Nuts (SV1-202), included.



Attach the Brake Housing to the Brake Housing Adaptor using a 10MM Wrench, the remaining Rectangle Head Screw (SV1-208), and two M6 Nylon Nuts.

## Installing and Adjusting the Brake Cable



Put the Brake Lever in the 'Brake On' (Down) position.  
Twist the Brake Pin until you can see the threads in the Brake Pin.



Check to ensure the Upper and Lower Brake Cable Adjustment Studs are screwed all the way in.  
If not, loosen the Nuts with a 10MM Wrench, twist the Studs in, and retighten the Nuts.



Pull the end of the Brake Cable out of the Brake Cable Sheath as far as possible, then check to ensure the Stud at the end of the Brake Cable will reach beyond the threads in the Brake Pin.



Push the Brake Cable through the Brake Cable Adjustment Stud and into the Brake Pin until the Stud at the end of the Brake Cable is beyond the threads in the Brake Pin.

**Note:** Needle Nose Pliers may be needed to get leverage on the Brake Cable.

Use the 3MM Allen Wrench to Insert the Hex Head Screw (SV1-203) into the threads of the Brake Pin.



Brake Cable Adjust Studs.

Put the Brake Lever in the 'Brake Off' (Up) position until the Brake Lever locks into position.

Put the Brake Lever in the 'Brake On' and 'Brake Off' position several times to set the Brake Cable.

If the Brake Pin does not move far enough out of, or in to, the Brake Disc, or the Brake Lever is too difficult to pull to the 'Brake On' (Up) position; the tension of the Brake Cable can be adjusted using the Brake Cable Adjustment Studs. Use a 10MM Wrench to loosen the Nut, turn the Brake Cable Adjustment Stud out a few threads, then retighten the Nut. Repeat this procedure as needed until the Brake Pin moves out of, and in to, the Brake Disc properly.



### Brake Lock Out

If the Brake Cable fails, you may need to disengage the Brake Pin.

To do so, pull Hex Head Screw (SV1-203) back and into the locking slot as shown.

3-1-2017

Sun Mountain

301 North First St. Missoula, MT 59801

(800) 433-9224

[www.sunmountain.com](http://www.sunmountain.com)

*Housing Instructions Page 3 of 3*

**End of Document**